

## Printing Manual

There are 3 modes to use our black LaserJet printers.

- **Walk-up USB Printing/USB 直接打印** [only **PDF/PS/PCL/PRN/CHT** types accepted]
- **Embedded Web Printing /网页打印** [only **TXT/PDF/PS/PCL/PRN/CHT** types accepted]
- **Installing the driver and printing/安装驱动后打印** [to print **more types** of your files].

The basic information of the printers is listed below.

No.	Name	Type	Location	IP Address
1	KITPC Printer@3rd Floor	HP_LaserJet_600_M602dn	The north of the lobby on the 3 <sup>rd</sup> floor at KITPC	159.226.44.119
2	KITPC Printer@4th Floor	HP_LaserJet_600_M602dn	The southwestern corner on the 4 <sup>th</sup> floor at KITPC	124.16.143.123
3	KITPC Printer@5th Floor	HP_LaserJet_600_M602dn	The southwestern corner on the 5 <sup>th</sup> floor at KITPC	124.16.142.124
4	KITPC Printer@5th Floor	HP_LaserJet_600_M602dn	The southwestern corner on the 6 <sup>th</sup> floor at KITPC	124.16.142.125

### 1. Walk-up USB Printing(USB 直接打印)

Our printers feature walk-up USB printing, so you can quickly print your files in a USB storage without sending them from a computer. The printer accepts standard USB storage accessories in the USB port on the front of the product.

**Step 1.** Insert the USB storage accessory into the **USB port** on the front of the printer.

**Step 2.** The USB STORAGE menu opens. Press the up arrow ▲ or the down arrow ▼ to highlight the folder name or the job name, and press the **OK** button.

**Step 3.** Use the numeric keypad, or press the up arrow ▲ or the down arrow ▼ to select the number of copies to print, and then press the **OK** button.

**Step 4.** To print more files, press the **OK** button to return to the USB STORAGE menu.

**Step 5.** Retrieve the printed job from the output bin, and remove the USB storage accessory.

**NOTE:**

The USB STORAGE menu displays for a short time and then the product returns to the Ready state. To open the menu again, open the RETRIEVE JOB menu, and then open the USB STORAGE menu.

## 2. Embedded Web Printing(网页打印)

**Note:** Only 'print-ready' files (.txt, .ps, .pdf, .pcl, .cht, .prn) will be accepted and processed, and all the pages of your document will be printed (you can't choose a part of the pages to print).

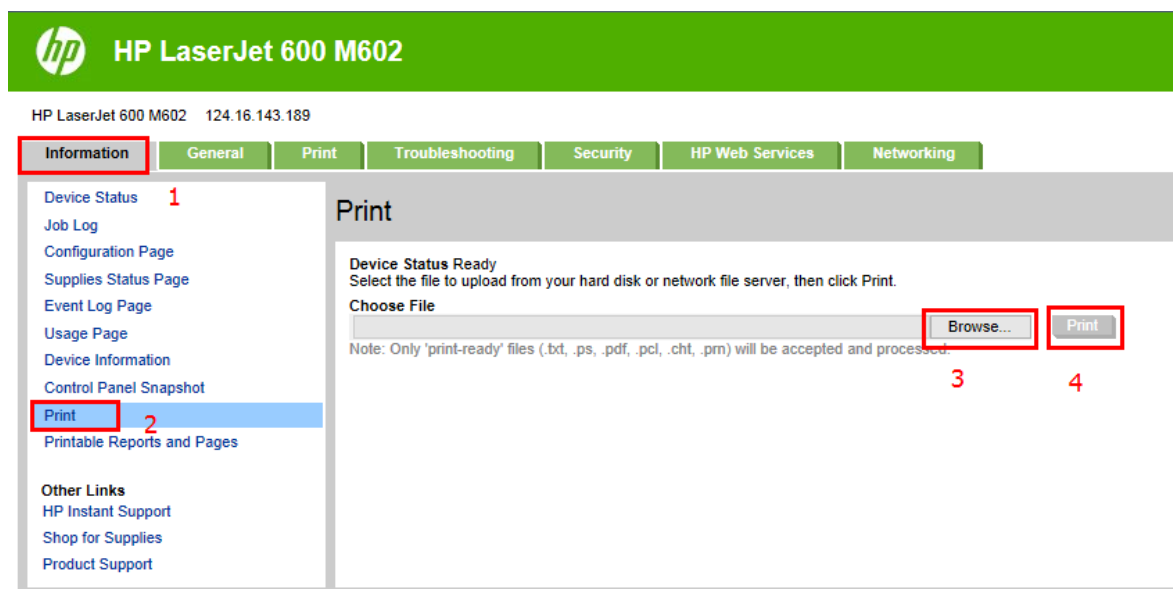
The 3rd floor printer:<https://159.226.44.119/hp/device/Print/Index>

The 4th floor printer:<https://124.16.143.123/hp/device/Print/Index>

The 5th floor printer:<https://124.16.142.124/hp/device/Print/Index>

The 6th floor printer:<https://124.16.142.125/hp/device/Print/Index>

The steps are listed as follows.



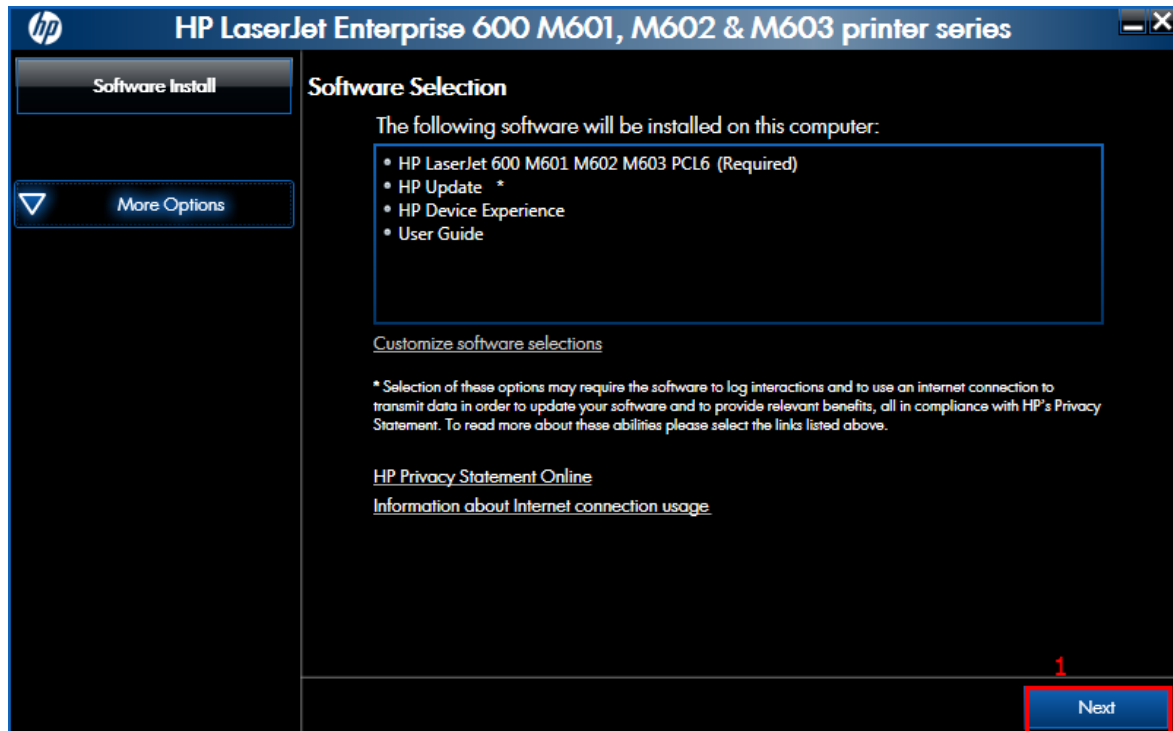
## 3. Installing the driver and printing(安装打印机驱动后打印)

### ● Windows

**Step 1.** Download the install file firstly. Open the directory you downloaded

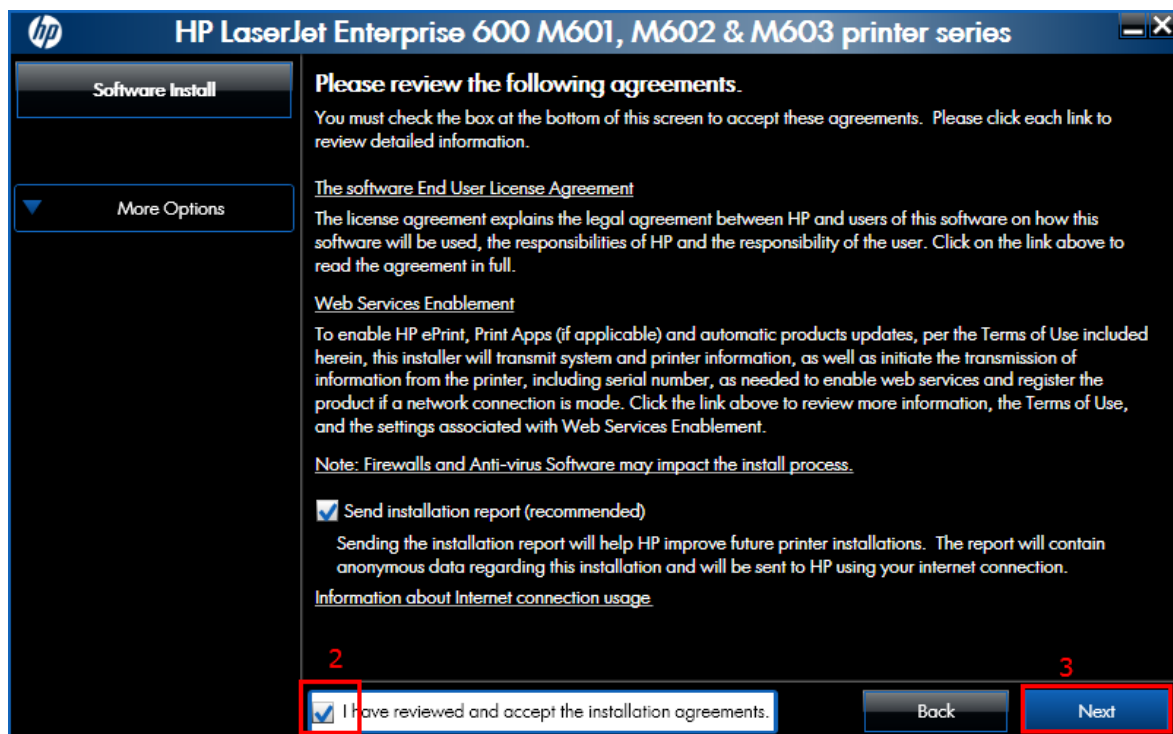
then and click the file 'setup.exe'. Here is the download link.

[ftp://power.itp.ac.cn/Printer%20Driver/HP\\_LaserJet\\_600\\_M602dn\\_PCL6/](ftp://power.itp.ac.cn/Printer%20Driver/HP_LaserJet_600_M602dn_PCL6/)

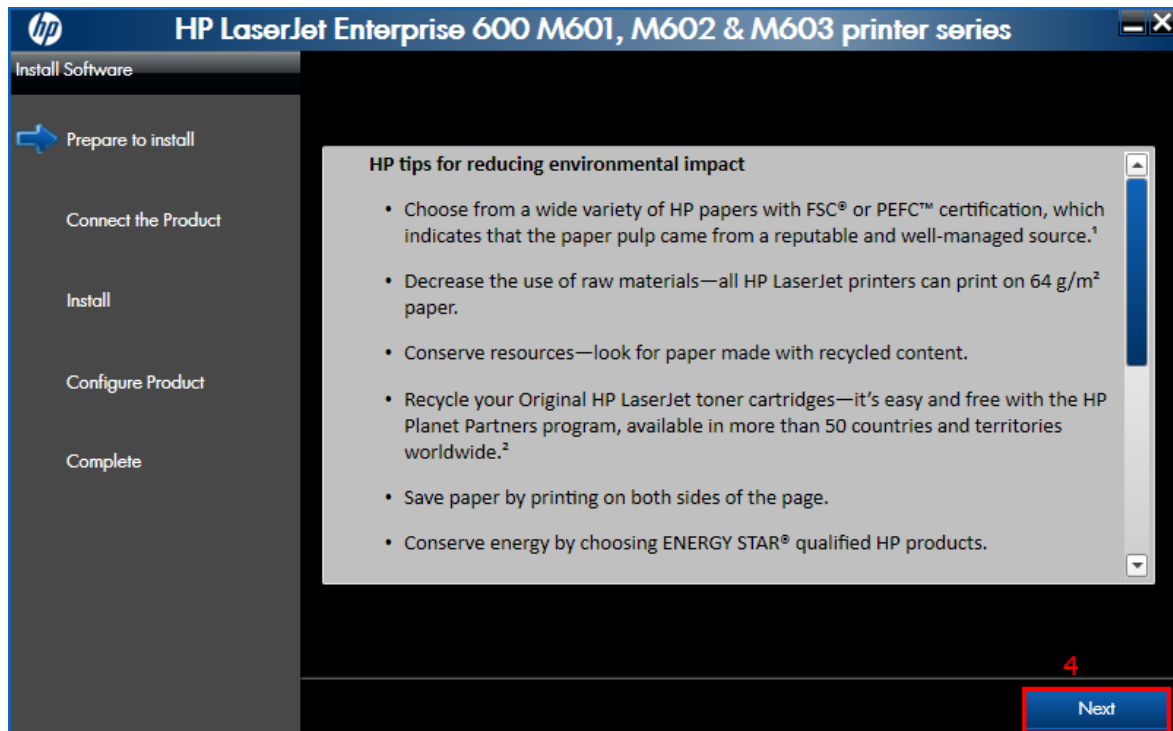


**Step 2.** Read the license agreement, and then check 'Accept' to continue the installation.

**Step 3.** Next.



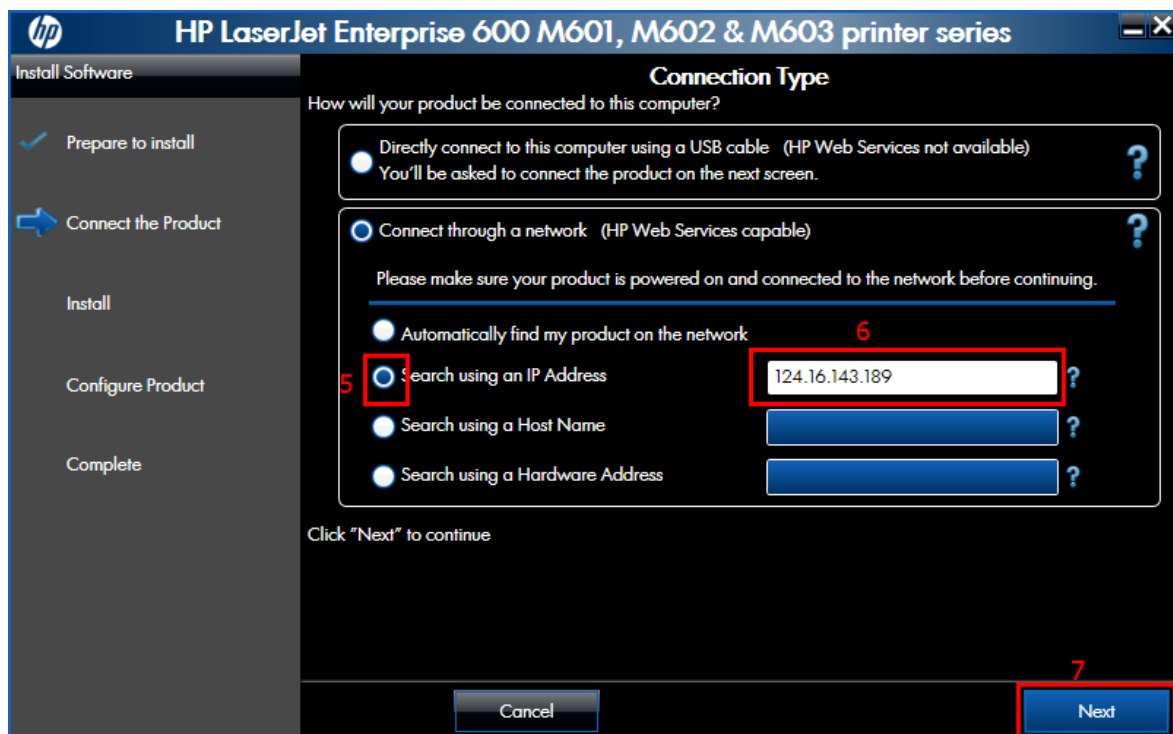
**Step 4.** Next.



**Step 5.** The Device Connection screen appears. Select the 'Search using on IP Address'.

**Step 6.** And enter the IP address of the printer which you want to use.

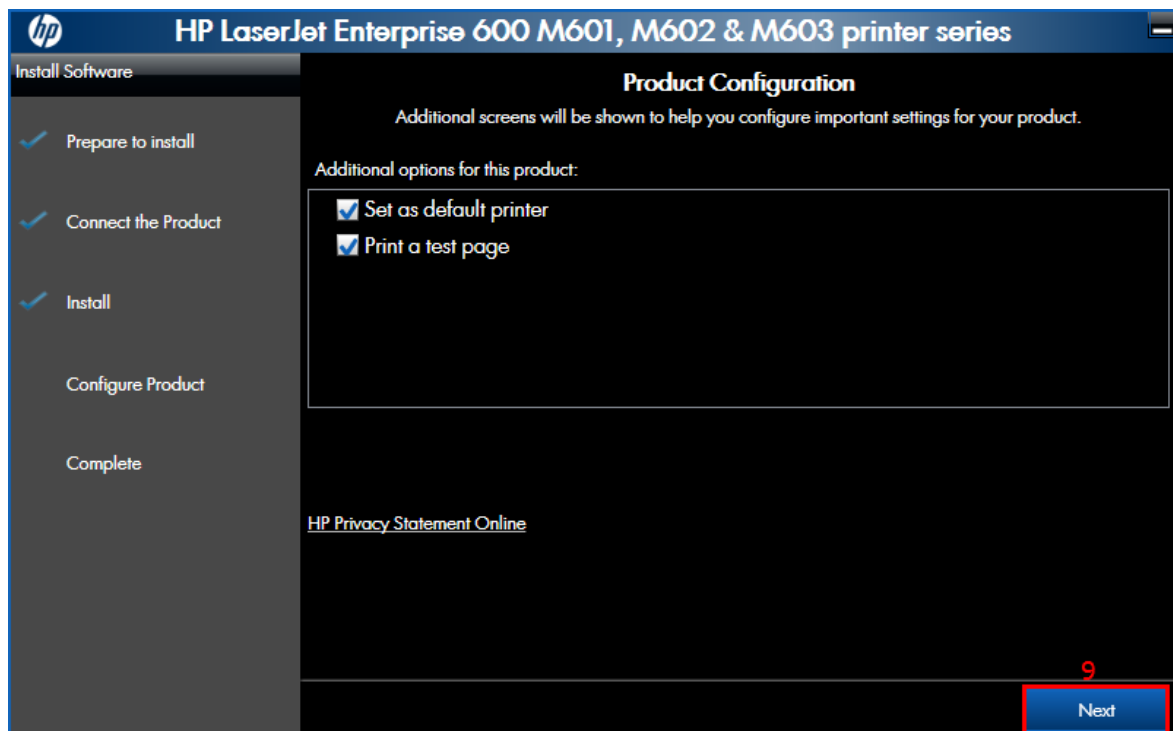
**Step 7.** Next.



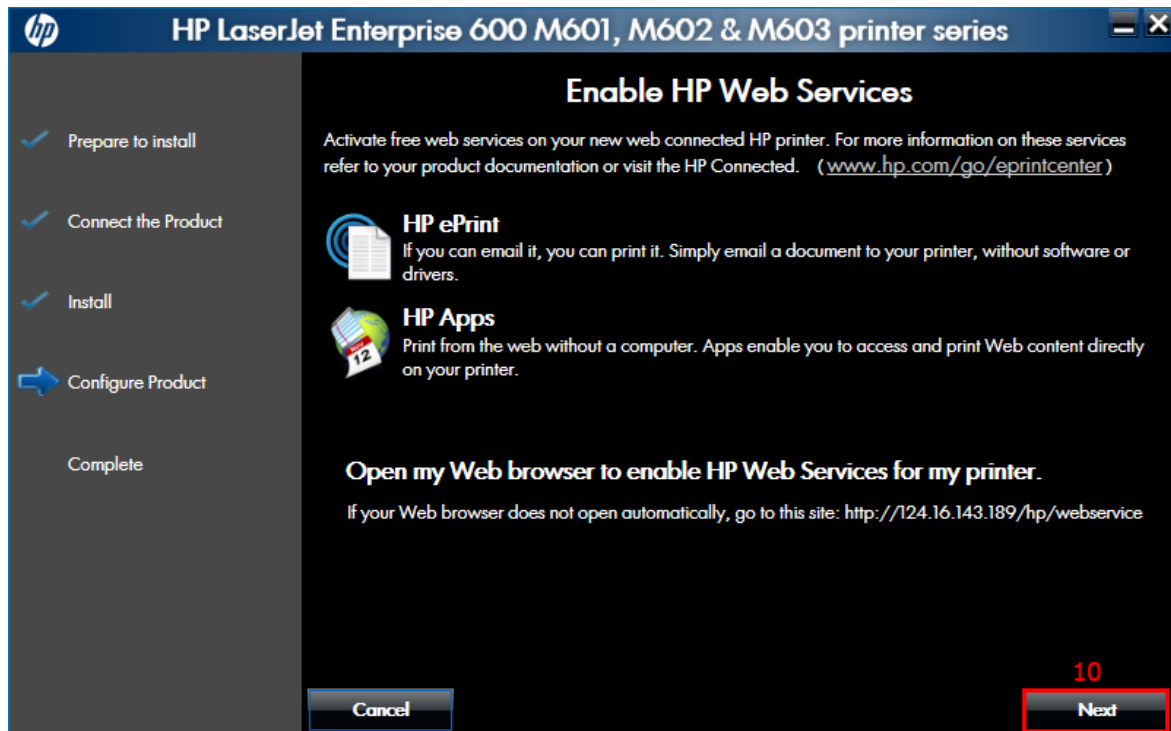
**Step 8.** Next.



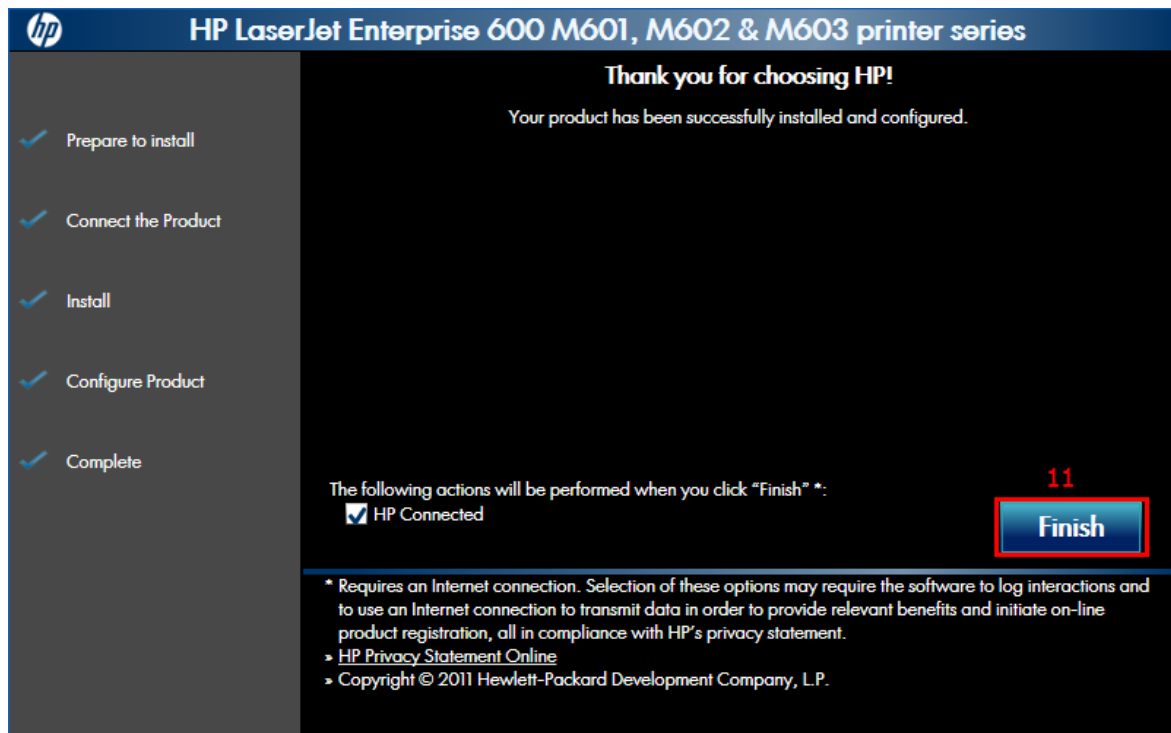
Step 9. Next.



Step 10.Next.

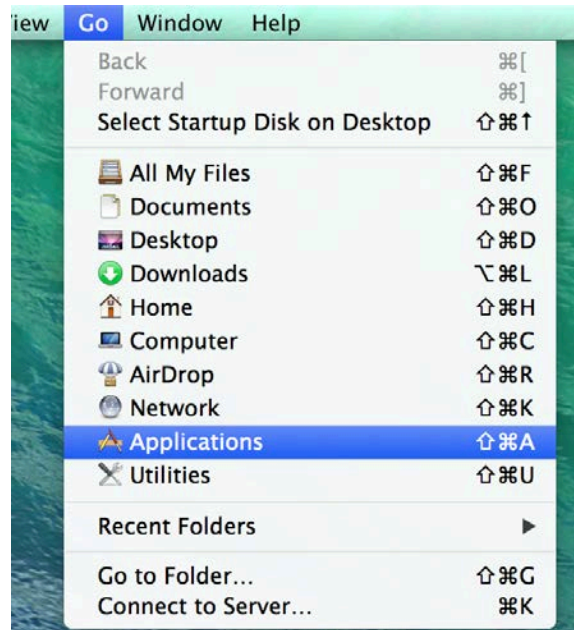


**Step 11.**Finish.

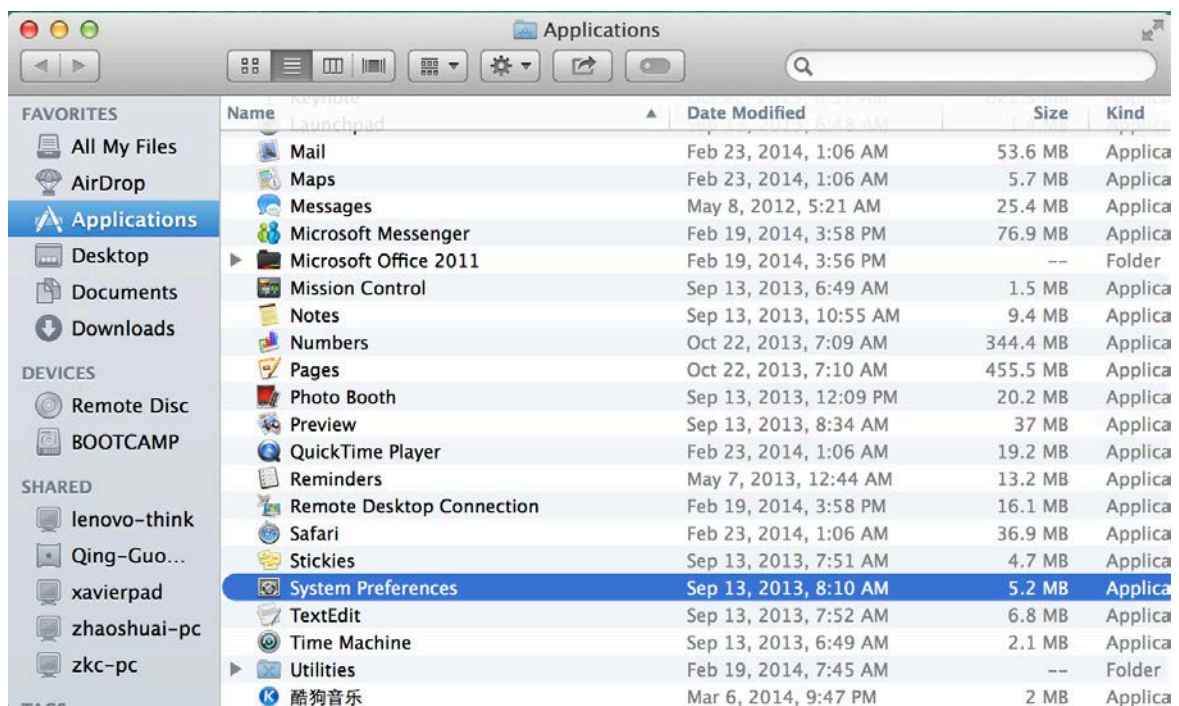


## ● Macintosh

**Step 1.** Choose 'Go', then 'Applications'.



**Step 2.** Open 'System Preferences' panel.

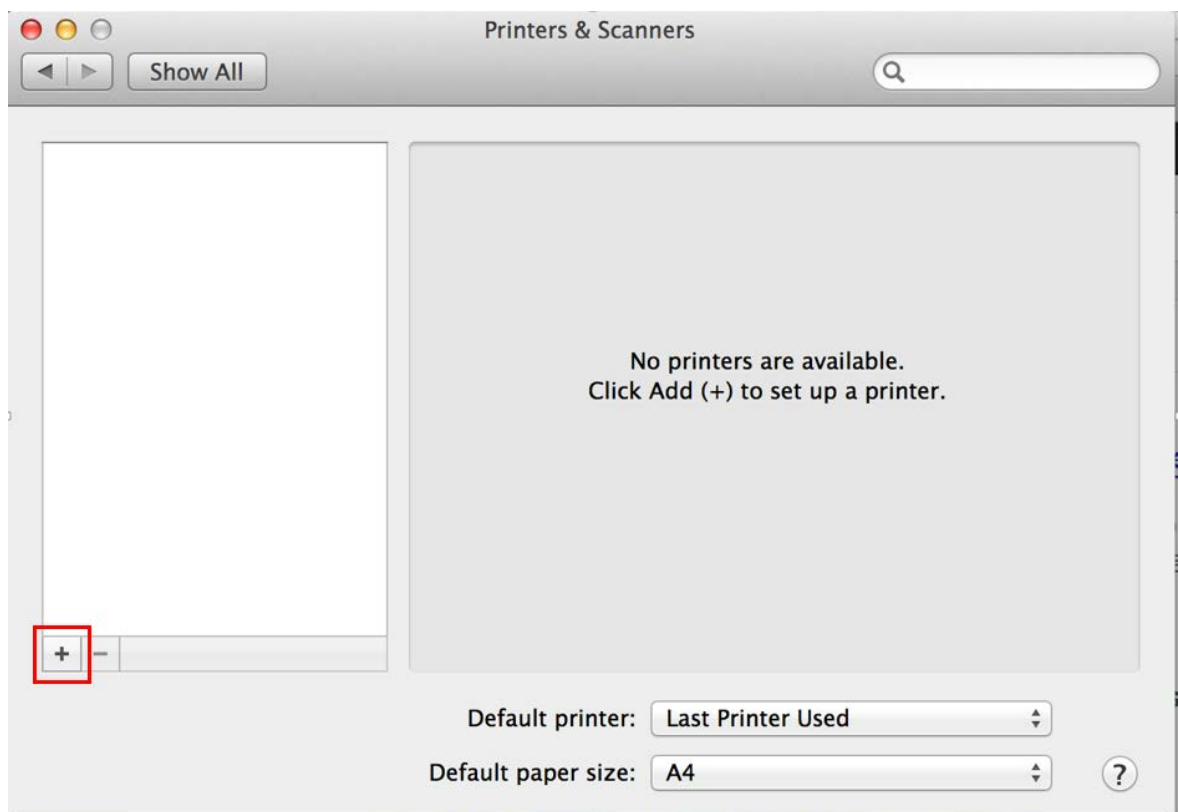


**Step 3.** Click the 'Printers & Scanners'.





**Step 4.** Click the '+' button to add a printer.





**Step 5.** Select the 'IP' button, and enter the IP address of the printer which you want to use, then 'Add', the printer will be in your printer list, the end.

The screenshot shows the 'Add Printer' window in macOS. The 'IP' tab is selected. The 'Address' field contains '124.16.143.189'. The 'Protocol' dropdown is set to 'HP Jetdirect - Socket'. The 'Queue' field is empty. The 'Name' field contains '124.16.143.189'. The 'Location' field is empty. The 'Use' dropdown is set to 'HP LaserJet Series PCL 4/5'. The 'Add' button is at the bottom right.

**NOTE:** If your MacOSX version is under v10.6 , you need install a driver. Plead [DOWNLOAD](#) the driver, and fill the form like below.

Address: The IP address of the printer which you want to use.

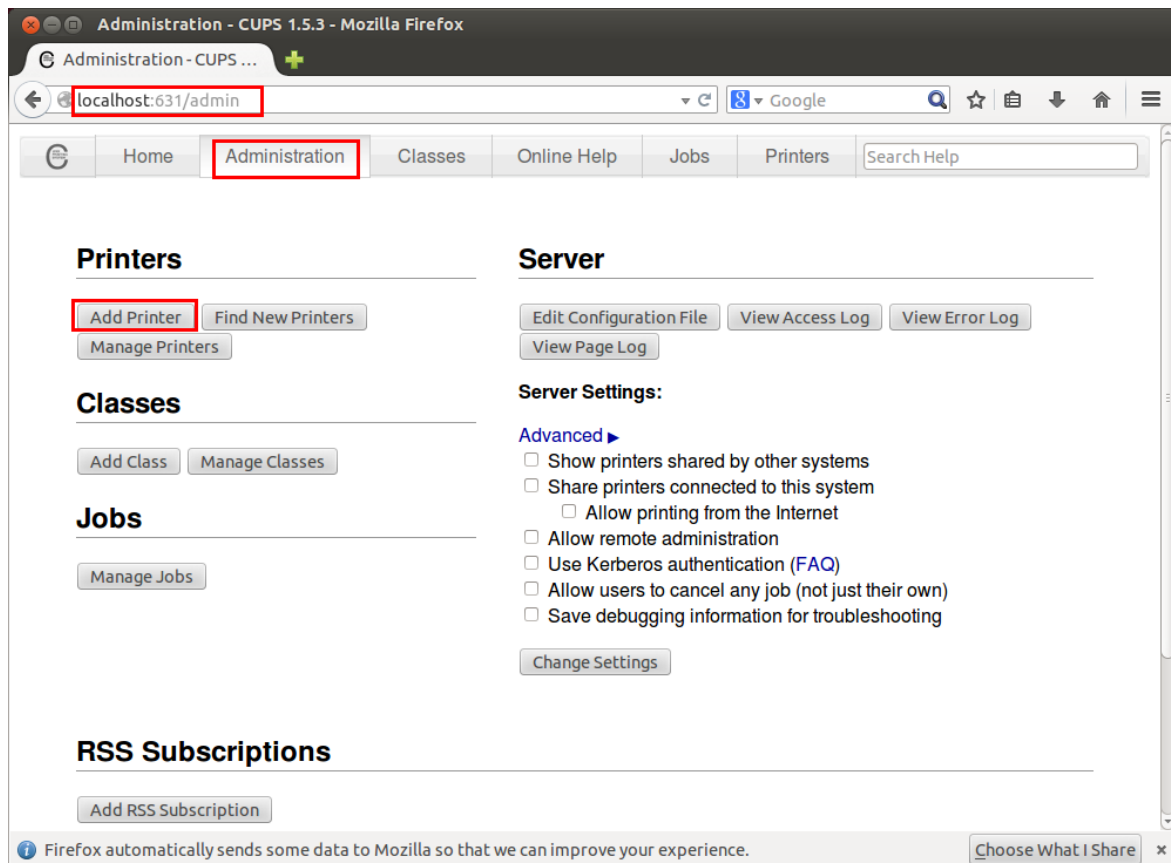
Protocol: HP Jetdirect – Socket

Use: HP LaserJet M602

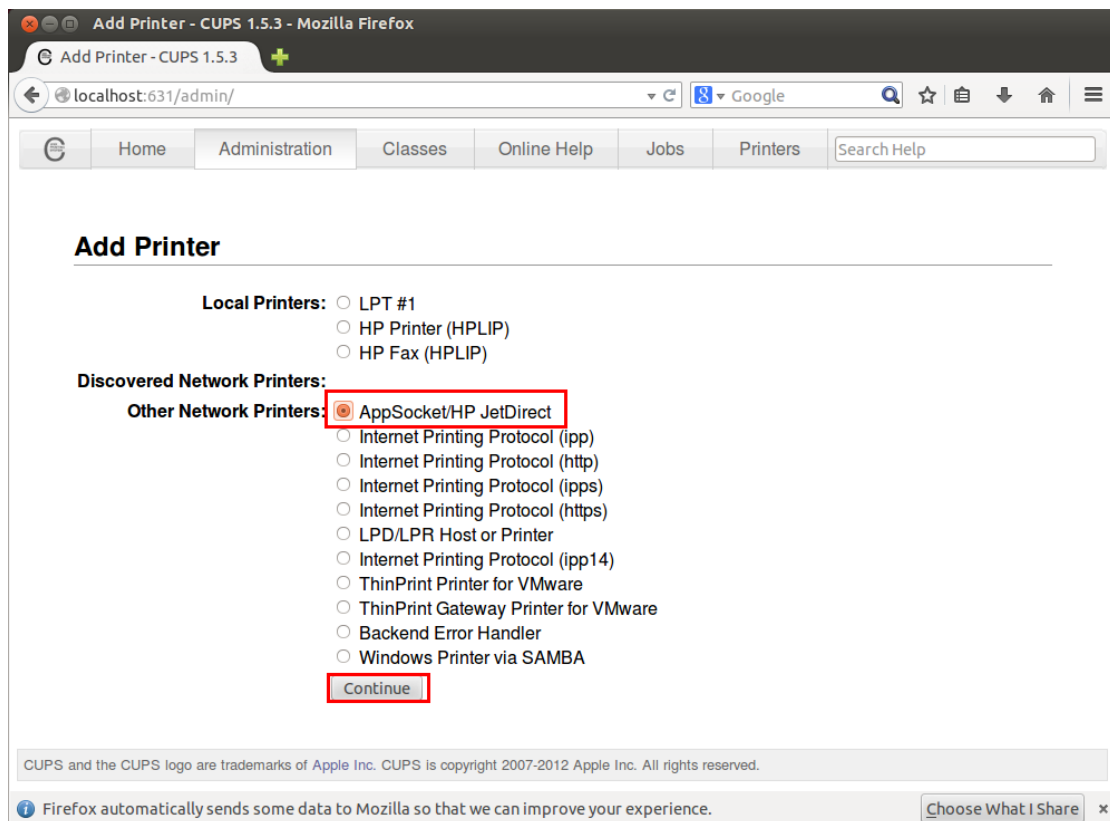
## ● Linux

**Step 1.** Open a Web Browser, like Firefox, and input <http://localhost:631> in the address field to open the printer-manage page.

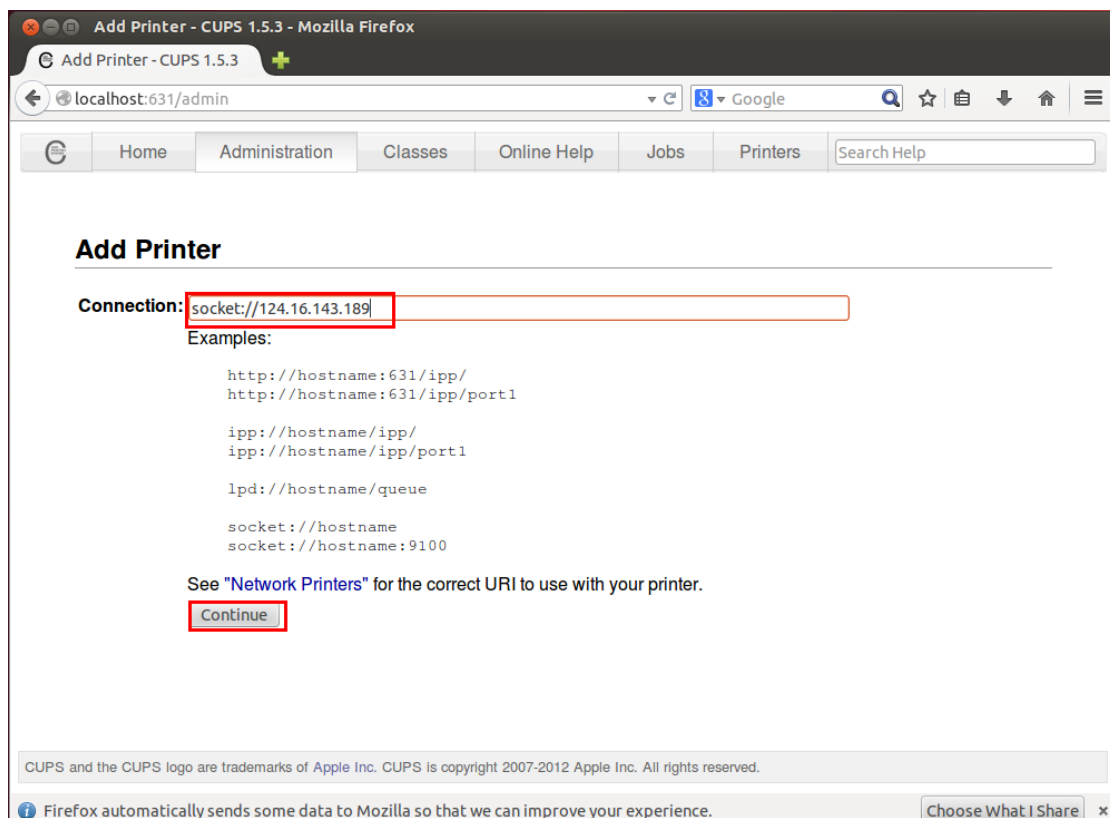
**Step 2.** Select the 'Administration' Tab, and double-click the 'Add Printer' button.



**Step 5.** Select the 'AppSocket/HP JetDirect' item and double-click the 'Continue' button to next page.



**Step 6.** Fill the 'Connection' with the printer IP address, 'socket://124.16.143.189' (enter the IP address of the printer which you want to use), and 'Continue'.



**Step 7.** Fill the form as you like and click the 'Continue' button to next page.

**Add Printer**

**Name:**   
(May contain any printable characters except "/", "#", and space)

**Description:**   
(Human-readable description such as "HP LaserJet with Duplexer")

**Location:**   
(Human-readable location such as "Lab 1")

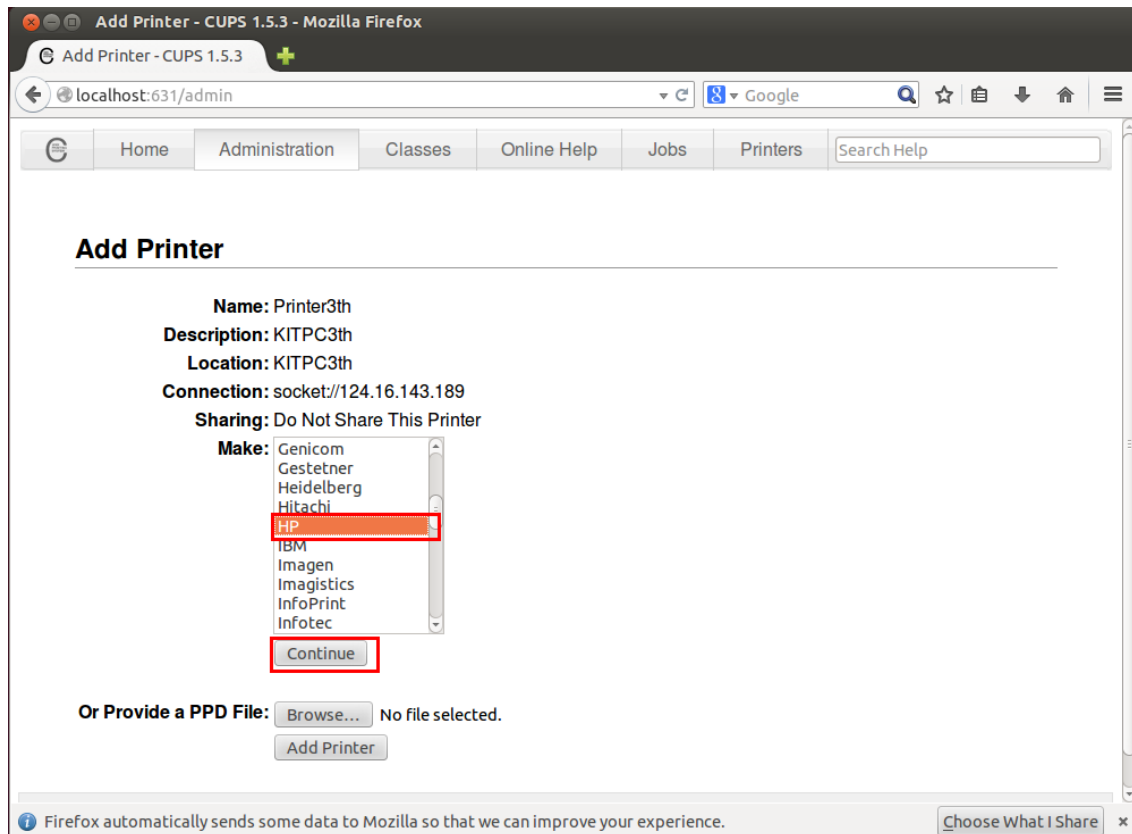
**Connection:** socket://124.16.143.189

**Sharing:** ☐ Share This Printer

CUPS and the CUPS logo are trademarks of Apple Inc. CUPS is copyright 2007-2012 Apple Inc. All rights reserved.

Firefox automatically sends some data to Mozilla so that we can improve your experience.

**Step 7.** Select 'HP' in the 'Make' list, then Continue.



**Step 7.** Select 'HP LaserJet Series PCL 6 CUPS(en)' in the 'Model' list, then 'Add Printer'.

